



DLF1744 / DLH1744 V3

17" TFT LCD, LED Backlight 1000nits,SXGA

17" TFT LCD panel, built-in 1000 nits high bright for sunlight readable LCD display, high transmittance color filter, high transmission polarizing plates, Low Power Consumption, suitable for kiosk, advertising, POS, marline, transportation, gaming, studio display, gas pump.

Key Features

- Sunlight Readable
- LED Backlight
- High Shock & Vibration Resistance
- Low Power Consumption
- Wide Operation Temperature.
- High Uniformity (90%)
- Low EMI Noise
- Wide Dimming
- Life Expectancy (70,000hrs)



Specifications

V1

Model No.	DLF1744 V3	DLH1744 V3
Description	17" TFT LCD, LED Backlight 1000nits,SXGA	
Display Area (mm)	337.92 x 270.34mm	
Brightness	1000 cd/m ²	
Resolution	1280 x 1024 (SXGA)	
Contrast Ratio	1000 : 1	
Pixel Pitch (mm)	0.264(H) x 0.264(V)	
Pixel Pre Inch (PPI)	96	
Viewing Angle	170°(H), 160°(V)	
Color Saturation (NTSC)	83%	
Display Colors	16.7M	
Response Time (Typical)	5ms	
Sync	LVDS	
Operating Temperature	0°C ~ 50°C	
Storage Temperature	-20°C ~ 60°C	
Power Consumption	16.1W /21.7W	
Dimensions (mm)	358.5 x 296.5 x 10.3	
Weight (Net)	1.4kg	
LED Driving Board	LID17A	
Control Board (Optional)	<input type="checkbox"/> AD6038GA <input type="checkbox"/> AD6038GD <input type="checkbox"/> AD2662GDVA <input type="checkbox"/> AD2662GDVAR	
<input type="checkbox"/> AD6038GA	VGA+Audio	
<input type="checkbox"/> AD6038GD	VGA+DVI	
<input type="checkbox"/> AD2662GDVA	VGA+CVBS+S-Video+Audio (Optional DVI / Component)	
<input type="checkbox"/> AD2662GDVAR	VGA+DVI (Optional S-Video/ Component / Audio)	
F / R Control Button	<input type="checkbox"/> 4 Key	
<input type="checkbox"/> 4 Key	Power Switch, Menu, Select (+,-),	
OSD Menu	Brightness, Contrast, H/V Position, Color, Phase, Clock...	
Optional	<input type="checkbox"/> AOT <input type="checkbox"/> Touch Screen	

Specifications are subject to change without notice.

All brands or product names are trademarks or registered trademarks of their respective companies.

DLF= Panel+LED Driving Board

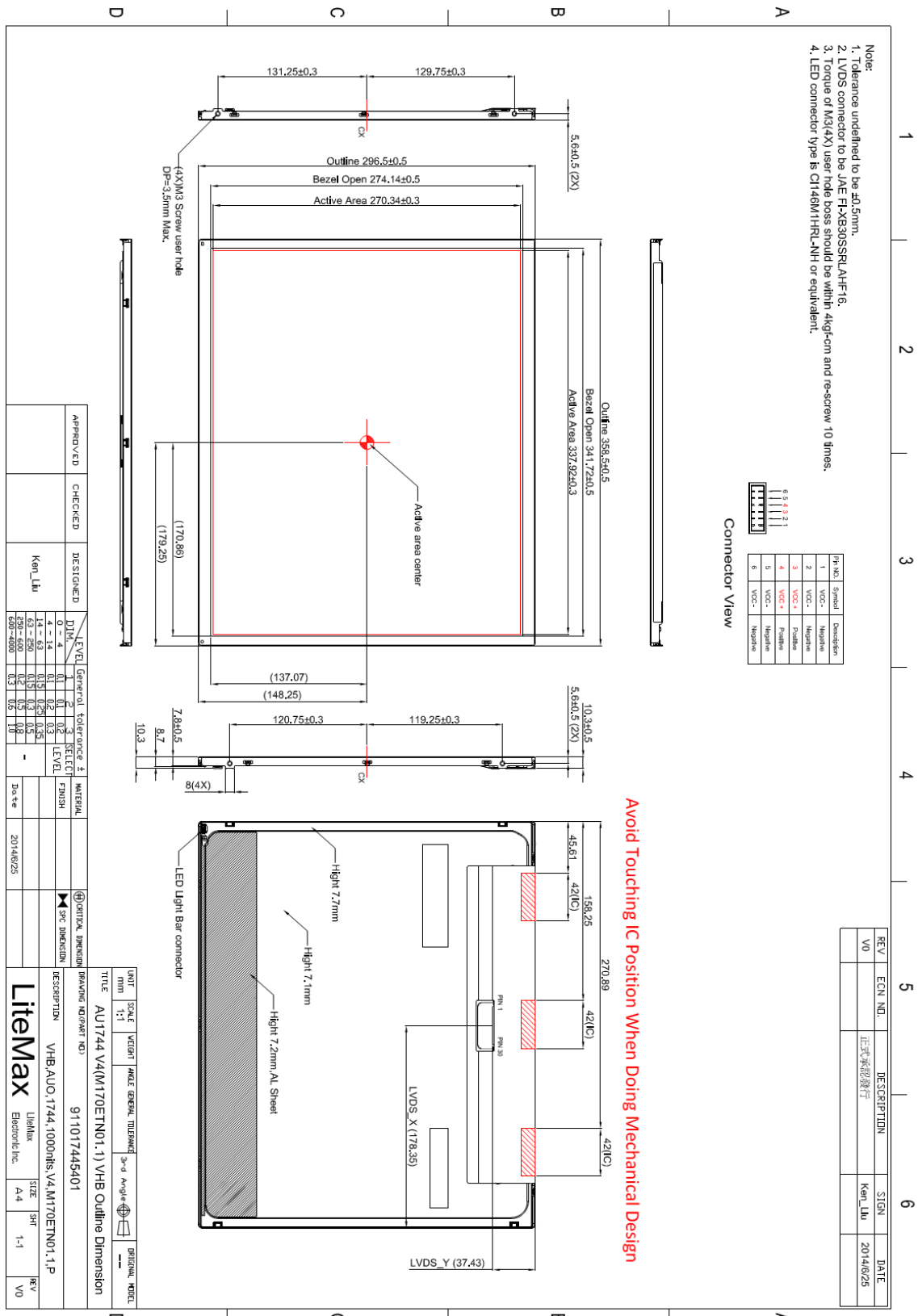
DLH= Panel+LED Driving Board+Control Board



Mechanical Drawing

Outline Dimensions

Unit : mm



APPROVED	CHECKED	DESIGNED	DATE
		Ken Liu	2014/6/25

LEVEL	General	tolerance	LEVEL	SELECT	LEVEL
0 - 4	0.1	0.1	0.2	0.2	0.2
4 - 14	0.15	0.15	0.25	0.25	0.25
14 - 43	0.2	0.2	0.3	0.3	0.3
43 - 600	0.3	0.3	0.5	0.5	0.5
600 - 4000	0.5	0.5	0.8	0.8	0.8

REV	ECN NO.	DESCRIPTION	SIGN	DATE
V0		正式承認發行	Ken Liu	2014/6/25

UNIT	SCALE	VECT	ANG	GENERAL	DESKETCH	3-rd Angle	ORIGINAL	NOTE
mm	1:1							

TITLE	DRAWING NO/PART NO.	DESCRIPTION	DATE
AU1744 V4(M170ETN01_1) VHB Outline Dimension	911017445401	VHB A.U.O. 1744_1000PHS_V4(M170ETN01_1)P	2014/6/25

ITEM	DESCRIPTION	DATE
1	VHB A.U.O. 1744_1000PHS_V4(M170ETN01_1)P	2014/6/25

ITEM	DESCRIPTION	DATE
1	VHB A.U.O. 1744_1000PHS_V4(M170ETN01_1)P	2014/6/25



Ordering Information

Part Number	Description
DLF1744-ENN-A21	17",1000nits,SXGA,LID17A,V03
DLH1744-ENN-I21	17",1000nits,SXGA,LID17A,AD6038GD,DC12V,V03

Optional Accessories

Part Number	Description
840612051100	ADAPTER.12V.5A.60W.EA1050A,P
810618301010	CABLE.POWER.AC.1830mm USA type
810618301090	CABLE,POWER,AC,1830mm Europe type
810618301050	CABLE.POWER.AC.1830mm UK type
810618301170	CABLE.POWER,AC,1830mm Australia type
810618301031	CABLE.POWER.AC.1830mm Japan type